

ARMY PUBLIC SCHOOL SHILLONG
ANNUAL EXAM (2022-23)
SUBJECT: ENVIRONMENTAL STUDIES
CLASS: V

Time : 2 hours 30 min

Full Marks: 80

General instructions:

- i) Read the question paper thoroughly before answering .*
- ii) Write all the answers clearly.*
- iii) Number the answers correctly .*
- iv) Attempt all questions.*

1. Choose the correct answer:

1x10=10

- a) Our normal body temperature is :
i) 97.4 °F ii) 98.4 °F iii) 99.4 °F iv) None of these
- b) It is not soluble in water.
i) Salt ii) Sand iii) Sugar iv) Detergent
- c) It is used to measure the volume of water.
i) Metre ii) Litre iii) Kilometre iv) Inches
- d) They are harmful unwanted plants.
i) Fungi ii) Algae iii) Weeds iv) Herbs
- e) It is a domestic fuel .
i) LPG ii) CNG iii) Kerosene iv) diesel
- f) She was the first women to go to space .
i) Bachendri Pal ii) Sunita Williams iii) Kalpana Chawla iv) None of these
- g) Seesaw is an example of:
i) Pulley ii) Lever iii) Wedge iv) Screw
- h) This temple houses the chariot of Sun God.
i) Akshardham temple ii) Lotus temple iii) Konark temple iv) Meenakshi temple
- i) Qutub Minar was built by kings of _____ dynasty.
i) Slave ii) Rajput iii) Mughal iv) Chola
- j) Which of these can have a bad effect on the soil?
i) Manure ii) Poor seeds iii) Pesticides iv) Water

2. State true or false:

1x6=6

- a) The process of breathing out air is known as inhalation.
- b) Jelly fish is an invertebrate .
- c) We should reduce our dependence on fossil fuels.
- d) Mt. Everest is the highest mountain in the world.
- e) A scrow is actually an inclined plane wrapped around a rod spirally.
- f) Tenant farmers are rich farmers who have their own farm.

3. Fill in the blanks:

1x6=6

- a) _____ is the only substance to exist in three states of matter.
- b) _____ is a floating plant.
- c) The force of falling water in a dam generates _____.
- d) The first Indian artificial satellite was _____.
- e) Axe , knife and chopper are the examples of _____
- f) _____ is also known as Harminder Saheb.

4. Match the column :

A

- (i) biogas
- (ii) first person on space
- (iii) pencil sharpner
- (iv) relics of Lord Buddha
- (v) loosening of soil

B

- (a) wheel and axle
- (b) Sanchi Stupa
- (c) ploughing
- (d) alternate fuel for cooking
- (e) Yuri Gagarin

1x5=5

5. Name the following in one word:

1x5=5

- a) A strong muscular organ which lies below the heart is called as.
- b) It is a step well which was built during ancient times with unusual design.
Name the type of simple machine.

c)



d)



e)



6. Define the following : 2x4=8

- a) Respiration
- b) Solution
- c) Green House Effect
- d) Simple machines

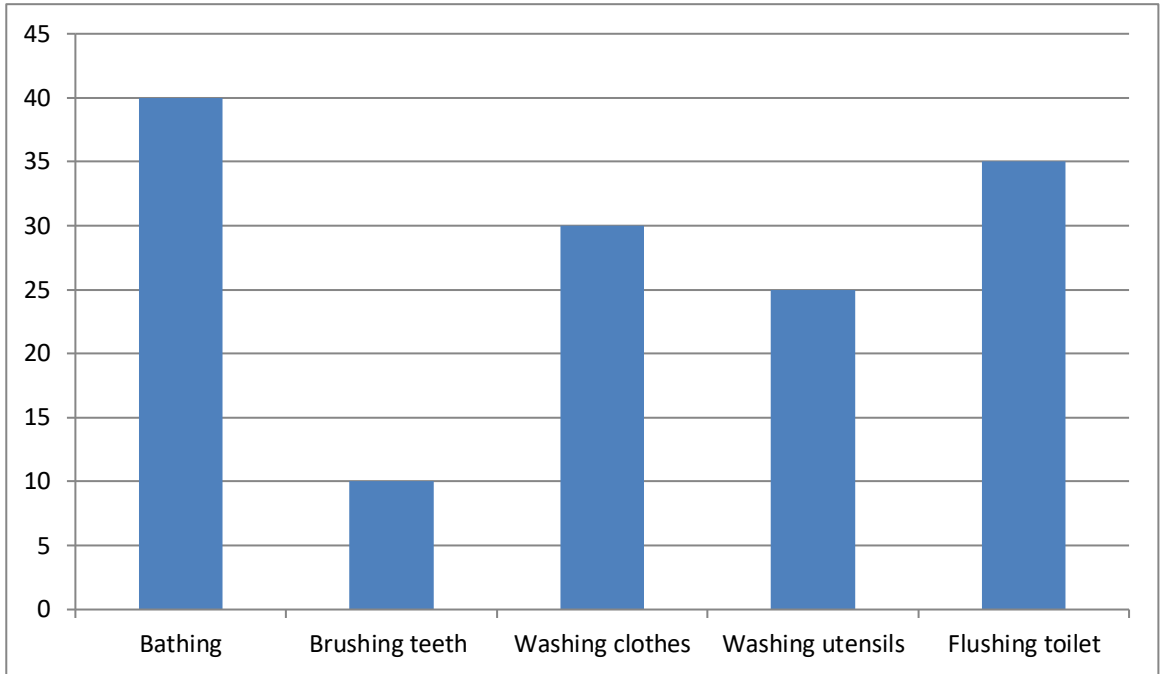
7. Give reasons for the following: 2x2=4

- a) Water is known as universal solvent.
- b) Life is tough for subsistence and tenant farmers.

8. Answer the following briefly: 2x5=10

- a) Why we should not hold our breath ?
- b) What is the main difference between soluble and insoluble substances?
- c) What is the difference between floating and submerged plants ?
- d) Describe the special training to an astronaut.
- e) What is the importance of ASI and UNESCO?

9. Answer the following questions: 3x4=12



- i) Which activity consumes maximum water?
 - ii) Which activity consumes the least water?
 - iii) How can we reduce the consumption of water in our houses ?
-
- b) How can we protect ourselves from malaria?
 - c) Give any three examples of biodegradable fuels.

d) Differentiate between renewable and non-renewable resources.

10 Answer the following in detail:

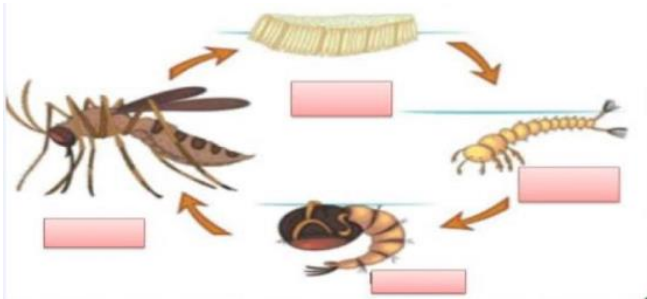
4x2=8

- a) How is our breath useful in other ways?
- b) Differentiate between manure and fertiliser.

11 Do as directed:

3x2=6

a) Label the stages of mosquito.



b) Name the equipment required for mountaineering: