

ARMY PUBLIC SCHOOL SHILLONG
EVALUATION- III (2022-23)
SUBJECT: MATHEMATICS
CLASS: I

Time: 1 Hour 30 Minutes

Maximum Marks: 50

Name: _____

Roll No. _____

Q1. Fill in the blanks:

(1×5=5)

- a. $2 \times 4 =$ _____
- b. $5 \times \underline{\quad} = 35$
- c. _____ is the first month of the year.
- d. Saturday comes before _____ .
- e. $6 \div 2 =$ _____

Q2. Write T for True and F for False:

(1×5=5)

- a. We can see flowers bloom in the summer month. _____
- b. May is the 5th month of the year. _____
- c. We need money to buy things. _____
- d. We measure weight in litre. _____
- e. $3 \times 3 = 6$ _____

Q3. Tick the correct answer:

(1×5=5)

- a. Multiplication is _____ of the same number.
 - (i) repeated addition
 - (ii) Division
 - (iii) sum
- b. $4 \times 4 =$
 - (i) 16
 - (ii) 8
 - (iii) 4
- c. $12 \div 3 =$
 - (i) 3
 - (ii) 4
 - (iii) 5

d. A vessel can hold is called its _____ .

- (i) capacity (ii) balance (iii) length

e. There are _____ months in a year.

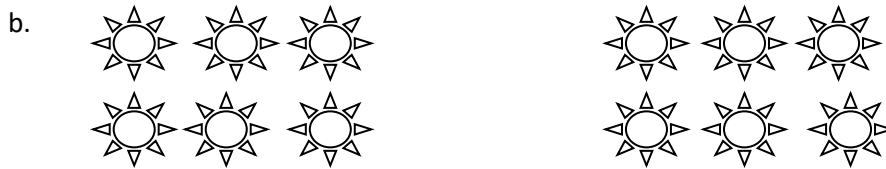
- (i) 7 (ii) 60 (iii) 12

Q4. Multiply the following and write the answer:

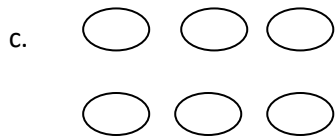
(2x5=10)



$3 + 3 + 3 = \underline{\quad} \times \underline{\quad} = \underline{\quad}$



$6 + 6 = \underline{\quad} \times \underline{\quad} = \underline{\quad}$



Distribute 6 marbles to 3 students.

Each student gets _____ marbles.



Flowers in all = _____

Number of groups = _____

Flowers in each groups = _____

Division Facts: _____ ÷ _____ = _____

e. (i) _____ x 9 = 45

(ii) _____ x 8 = 32

Q5. Solve the following:

(2x4=8)

- a. Distribute 16 flowers to 4 girls.

$$16 \div \underline{\quad} = \underline{\quad}$$

- b. Multiply:

i) $5 \times 8 = \underline{\quad}$

ii) $3 \times 8 = \underline{\quad}$

- c) Skip count in 4s and write the answer:

4, 8, 12, , , , , 32

- d) Write L or mL to write the capacity of the following:

i) A spoonful of medicine

ii) A bucket of water

Q6. Draw hands on the clocks to show the Time:

(2x3=6)



i) 9 o'clock



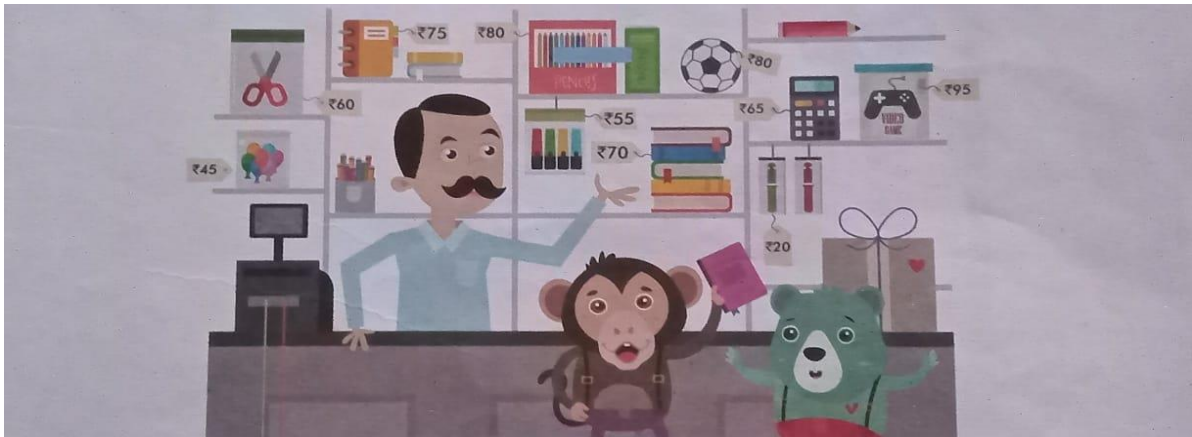
ii) 1 o'clock



iii) 6 o'clock

Q7. Look at the items kept in the shop and answer the following questions:

(6x1=6)



i) Which item costs the most ? Write its name and price.

Ans. _____

ii) Which item costs the least? Write its name and price.

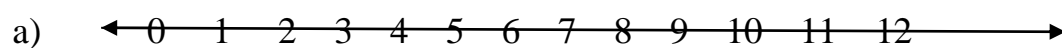
Ans. _____

iii) What is the cost of the notebook?

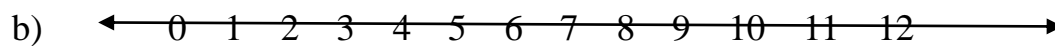
Ans. _____

Q8. Divide the following using the Number lines.

$$(2\frac{1}{2} \times 2=5)$$



$$8 \div 2 =$$



$$6 \div 3 =$$
